



Hyatt Regency Walkway Collapse Case Study

Kaleb Leblanc, Arjun Soni, Bryson Strang, Jason Telanoff, Logan Walther

*This is Jason's way of dealing with sadness and depression, please do not take offense. People deal with grief in different ways.

114 People Died*

[illegible]

What happened?

- On July 17, 1981, two of the three walkways at the Hyatt Regency Hotel collapsed, killing 114 people and injuring over 200.
- This was due to a changed design from a one-rod to a two-rod system to simplify the assembly task.
- The top walkway collapsed on the bottom one, causing death and destruction to all who stood on and below.
- LET THIS BE A LESSON!!! DO NOT TEMPT ME!!!! I AM YOUR RULER NOW AND FOREVER!!!!!!



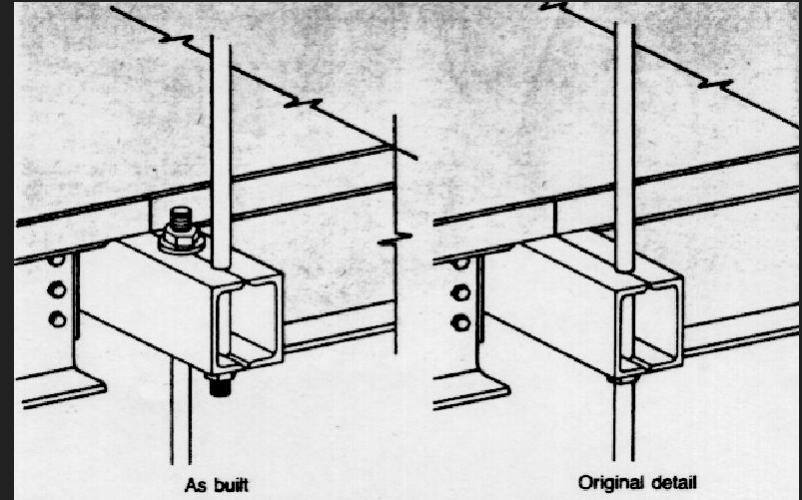
Ethical Issues/Negligence

- The main ethical issue of this case study is negligence on the part of the G.C.E International Inc.
- Part of the atrium roof collapsed due to the same weight issues while the hotel was first under construction.
- An inspection team from G.C.E was called in and afterwards, the firm told the owner that the problem was fixed and that the atrium was safe
- Negligence and lack of attention are what caused this disaster.



How could have the outcome been different

- To simplify construction, the firm approved a last minute alteration.
- By threading two rods through each side of the supporting beam, they put too much stress on the longitudinal weld which resulted in the beam failing.
- Sticking to the original design would have avoided this catastrophe.







How could the problem be solved?

- If the structural design was not changed to cost less, the integrity of the rods would have been stronger
- The team could have spent more time analyzing the first collapse and working on a better solution.
- If there was a greater focus on the structural safety of the walkways the two collapses would've been avoided

Conclusion-Group Outcome

- The risks towards safety weren't worth the money that was saved by not redesigning the walkways.
- The investigation into the incident found the engineering firm guilty for creating the plans that lead to the failure.
- The owner didn't know that the design would be faulty as he was told by the firm that the design was safe.
- Many early red flags surely should've motivated a redesign, however due to negligence on the part of the firm, no proper changes were made.

Work Cited

Hyatt Regency WALKWAY collapse by staff. Engineering.com. (n.d).
<https://www.engineering.com/story/hyatt-regency-walkway-collapse>.

Télécharger Hyatt Regency walkway Collapse summary. hyatt regency walkway collapse summary. (n.d.).
https://www.pdfprof.com/PDF_Image.php?id=86650&t=39.

Tyrell, W. (2020, October 2). *Engineering disasters: Hyatt Regency WALKWAY collapse (1981)*. EngineeringClicks. <https://www.engineeringclicks.com/hyatt-regency-walkway-collapse/>.

YouTube. (2020, December 4). *Hyatt Regency collapse animation*. YouTube.
https://www.youtube.com/watch?v=n-YXJ_cMzIA.

Image Links

[Slide 1](#)

[Slide 3](#)

[Slide 3](#)

[Slide 3](#)

[Slide 4](#)

[Slide 5](#)

[Slide 7](#)

[Slide 7](#)